

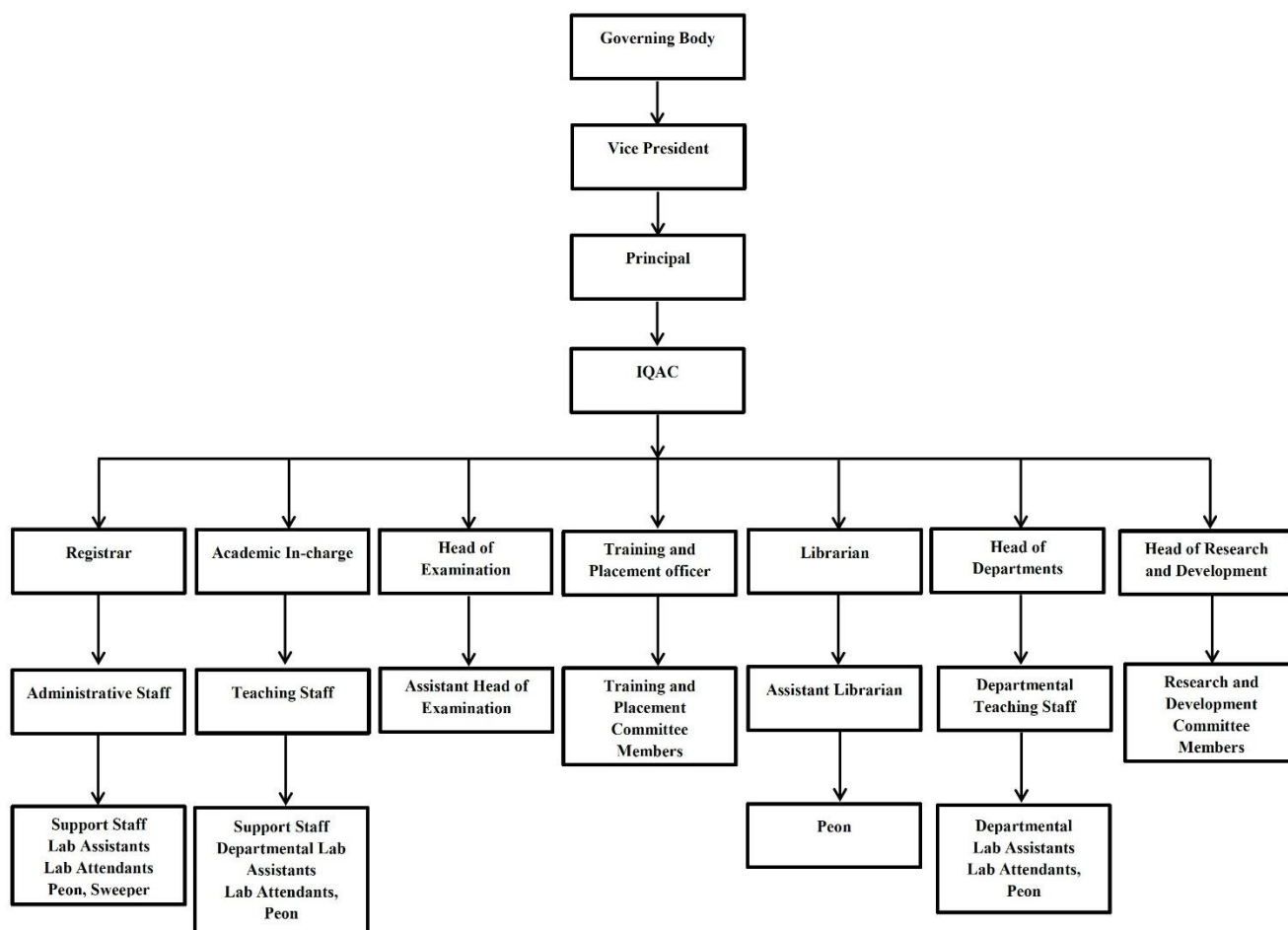


President :  
Shri. Amrishbhai R. Patel  
M.L.C.

Principal :  
Dr. S. B. Bari  
M.Pharm. Ph.D., D.I.M.F.I.C.

## ORGANOGRAM

The organogram is an administrative diagram of the college that illustrates its decentralized administrative structure. The college administration operates as a collaborative effort involving the Principal, teaching staff, non-teaching staff, and students, with the cooperation and support of all stakeholders working toward a shared vision and mission.



*Dr. S. B. Bari*  
Principal  
H.R. Patel Institute of Pharmaceutical  
Education & Research  
Shirdpur Dist. Dhule (MS)

The Shirdpur Education Society's  
**H. R. Patel Institute of Pharmaceutical Education and Research**

NBA reaccrredited B.Pharm Programme [2022-2025] : NAAC Accredited with 'A' Grade

"Serving Nation's Health"

Karwand Naka, Shirdpur - 425405, Dist : Dhule (MS).

☎ (02563) 257599, ☎ 9049032111, 9850223277

@ <http://www.hrpatelpharmacy.co.in> ✉ [principal@hrpatelpharmacy.co.in](mailto:principal@hrpatelpharmacy.co.in), [registrar@hrpatelpharmacy.co.in](mailto:registrar@hrpatelpharmacy.co.in)